

BILL NO.: 5021

ORDINANCE NO.: _____

Introduced by: City Manager Nathan Mai-Lombardo

**AN ORDINANCE AUTHORIZING THE CITY MANAGER TO PURCHASE A
CRACK SEALER FROM SEAL MASTER**

**NOW, THEREFORE, BE IT ORDAINED BY THE CITY COUNCIL OF THE CITY OF BERKELEY,
MISSOURI, AS FOLLOWS:**

Section 1. The City Council of the City of Berkeley hereby authorize the City Manager to purchase a Crack Pro Heated Hose machine from Seal Master for \$75,349.

Section 2. This Ordinance shall be in full force and effect from and after its date of passage.

1st Reading this 04th day of March 2024

2nd Reading this 04th day of March 2024

3rd Reading, PASSED and APPROVED, this day of 2024

Babatunde Deinbo, Mayor

ATTEST:

Deanna L. Jones, City Clerk

Approved as to Form:
Donnell Smith, City Attorney

Final Roll Call:

Councilwoman Verges	Aye ___	Nay ___	Absent ___	Abstain ___
Councilwoman Williams	Aye ___	Nay ___	Absent ___	Abstain ___
Councilman Hoskins	Aye ___	Nay ___	Absent ___	Abstain ___
Councilwoman Anthony	Aye ___	Nay ___	Absent ___	Abstain ___
Councilman Hindeleh	Aye ___	Nay ___	Absent ___	Abstain ___
Councilwoman-at-Large Crawford-Graham	Aye ___	Nay ___	Absent ___	Abstain ___
Mayor Deinbo	Aye ___	Nay ___	Absent ___	Abstain ___

SealMaster[®] Equipment Rental Program



SealMaster[®]

Pavement Products & Equipment

www.sealmaster.net

Estimate



13616 NW Industrial Cir.
 Bridgeton, MO 63044
 314-739-7325
 224-208-1819 Fax

Date	Estimate #
9/27/2023	3541

Name / Address
City of Berkeley 8425 Airport Rd. Berkeley, MO 63134

Ship To
City of Berkeley 8425 Airport Rd. Berkeley, MO 63134

Qty	Item	Description	Terms	Project
			Cost	Total
1	E2747HH	Crack Pro 125 DA Melter/Applicator w/ Heated Hose, Air Compressor and Diesel Engine	73,799.00	73,799.00T
1	P74001 Freight	23' Heated Hose Upgrade Freight-Delivery	900.00 650.00	900.00T 650.00
			Subtotal	\$75,349.00
			Sales Tax (0.0%)	\$0.00
			Total	\$75,349.00

CRACK PRO® HEATED HOSE MACHINES

OIL-JACKETED MELTER / APPLICATORS
FOR HOT POUR CRACK SEALING MATERIALS

ALL DIESEL POWER FOR MAXIMUM EFFICIENCY!

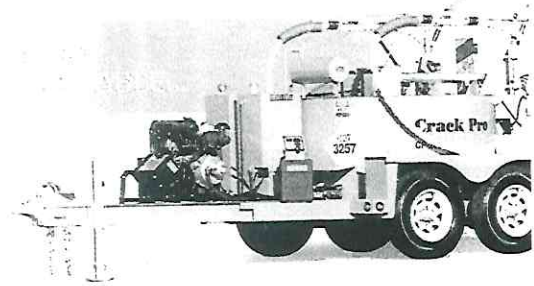
Both the burner and the engine are powered by diesel fuel for maximum safety, efficiency, and performance.

Crack Pro Heated Hose Machine Features:

- State-of-the-art heated hose maintains material temperature throughout the application process
- Industry's fastest heat-up and recovery, (ready to apply product within 1 hour).
- The waterproof steel control cabinet houses all safety interlocks, operations and monitoring of the heating systems (hose, material, heat transfer oil), agitation, pump and audible horn for directional control.
- Anti-splash material loading hatch for safer loading
- Insulated with 1.5" ceramic, covered by a 14-gauge steel outer body
- Electro-hydraulic manifold with flow control for pump and mixer speeds
- Liquid cooled Kubota diesel engine
- Diesel fired Beckett Burners are electronically controlled with auto shut off, and side mounted for easy maintenance
- Horn button on wand notifies driver to move ahead or back
- Direct-drive FWD/REV full sweep agitation

TR 125 & 260 DA Model Features:

- Direct drive air compressor with 100' x 5/8" reeled hose & wand
- V1505 Kubota diesel engine (brand subject to change)



TR 260 Double Pump now available!

SPECIFICATIONS:

Tank Capacity.....	125, 260, 400 ga
Heat Transfer Oil.....	25, 30, 45 gallon cap
Maximum BTU Input.....	372,000
Construction.....	Oil jacket type
Temperature Control.....	Automatic Elect
Tank Opening.....	16" x 24" no splash material loc
Insulation.....	1 1/2" High Temperature Cer
Agitation.....	Full Sweep, Hydraulically Dr Forward / Re
Material Pump.....	2" Steel Gear, Revei
Heating System.....	Bottom fired forced air diese
Suspension.....	Torsion type axle with 5 lug tubeles
Application Hose.....	3/4" x 19' electric hose [23' avai
Heated Hose.....	Eliminates need to flus hose for cle

PRODUCT #	DESCRIPTION	WEIGHT
E2745HH	TR 125 D	3,700 lbs.
E2747HH	TR 125 DA	4,000 lbs.
E2755HH	TR 260 D	5,000 lbs.
E2765HH	TR 260 DA	5,300 lbs.
E2755DPH	TR 260 Double Pump	5,300 lbs.
E2770DPH	TR 400 Double Pump	6,180 lbs.
P74001	Upgrade to a 23' hose	

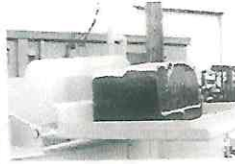
Available Options on Page 69

* Call for pricing

STANDARD FEATURES ON ALL "D" AND "DA" MODELS:



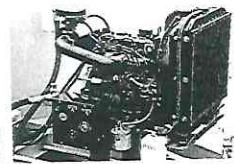
Digital Control Center with protective steel cover



Anti-Splash Material Loading Hatch



Electro-hydraulic manifold



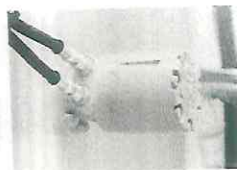
Liquid Cooled Kubota Diesel Engine



Horn button



Diesel fired Beckett Burner

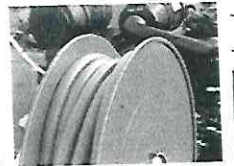


Direct-Drive FWD/REV Full Sweep Agitation

STANDARD FEATURES ON ALL "DA" MODELS:



Direct Drive Air Compressor



100' x 5/8" Reeled Hose & Wand

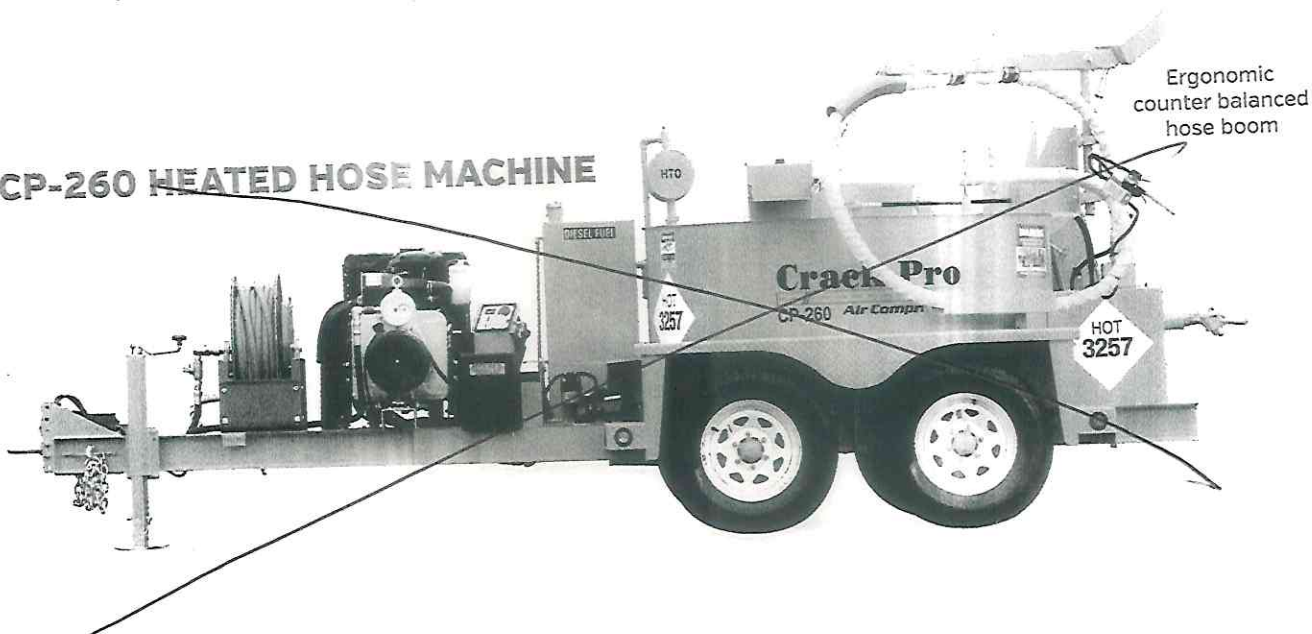


V1505 Diesel

CP-125 HEATED HOSE MACHINE



CP-260 HEATED HOSE MACHINE



CRACK PRO® MELTER / APPLICATOR OPTIONS

PRODUCT #	DESCRIPTION
-----------	-------------

Options:

PE2710	Material Block Conveyor
E2680	Hydraulic surge brake assembly
P553A008	2 5/16" ball hitch
PE2680	Arrowboard
P447A001	Fire extinguisher - 10 lbs.
P74000B231	Engine security cover
P163A012	Crack sealing square
P74000B004	Tool box
P74002	LP tank stand
P74000B301	Spare Tire Mount
P514A017	15" Spare Tire Assembly
P470A003	2" application swivel disc
P470A002	3" application swivel disc
P470A007	5" application swivel disc
PE2685	Strobe / Beacon Light



Arrowboard

State-of-the-art material conveyor for optimum safety and convenience

