

Index

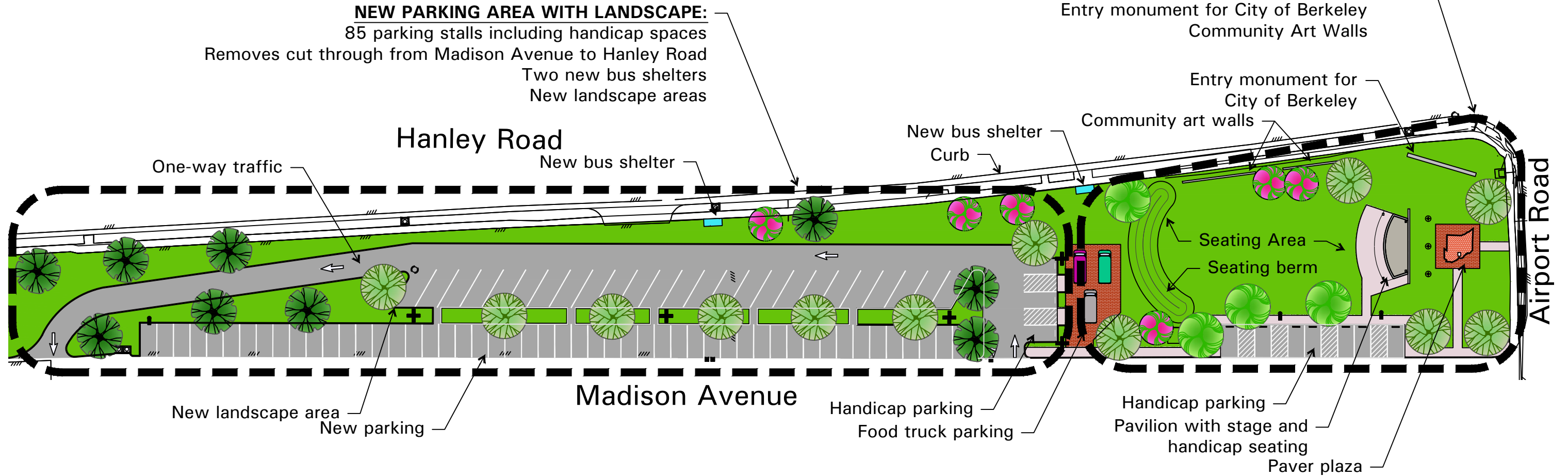
- Page 1 of 5 -Overall site plan with parking layout
- Page 2 of 5 -Park pavilion with stage and memorial plaza
- Page 3 of 5 -City of Berkeley entry monument and Wall of Honor
- Page 4 of 5 -Pavilion with stage and Alternate entry sign
- Page 5 of 5 -Bus shelter and Community Art Wall concepts

**BERKELEY MEMORIAL PARK INCLUDES:**

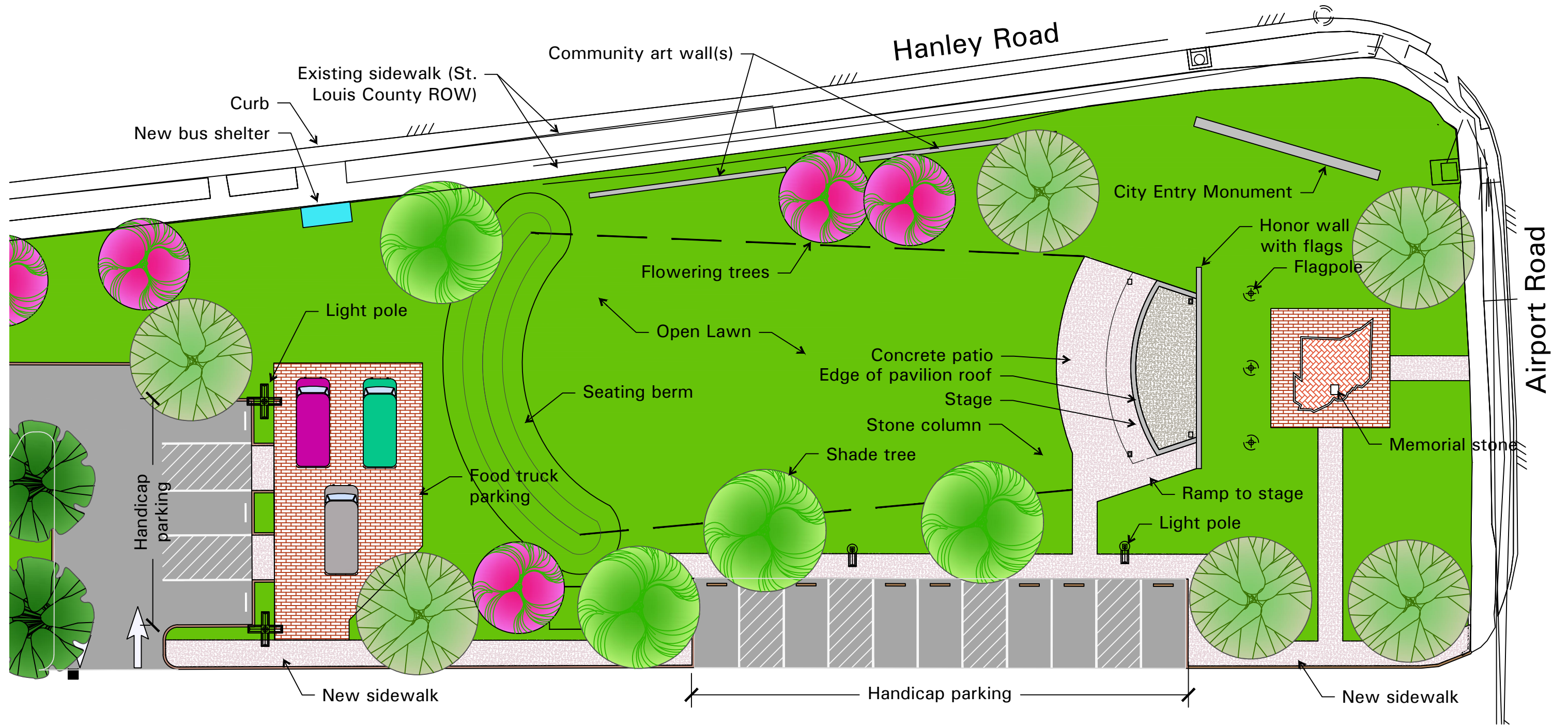
- Pavilion with stage for live performances
- Seating area for viewing
- Wall of Honor (facing Airport Road)
- Three flag poles for USA, Missouri and Berkeley flags
- Paver plaza with with Memorial Stone and State of Missouri at center
- Entry monument for City of Berkeley
- Community Art Walls

**NEW PARKING AREA WITH LANDSCAPE:**

- 85 parking stalls including handicap spaces
- Removes cut through from Madison Avenue to Hanley Road
- Two new bus shelters
- New landscape areas

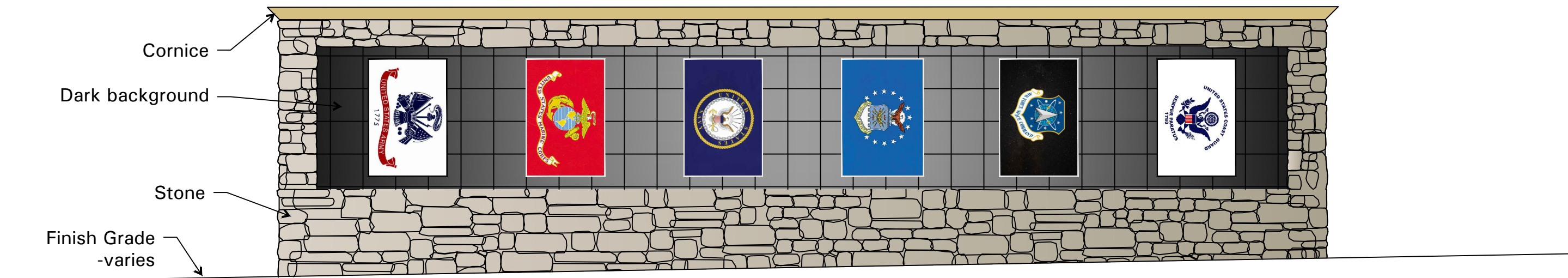


1 Overall site plan with parking layout

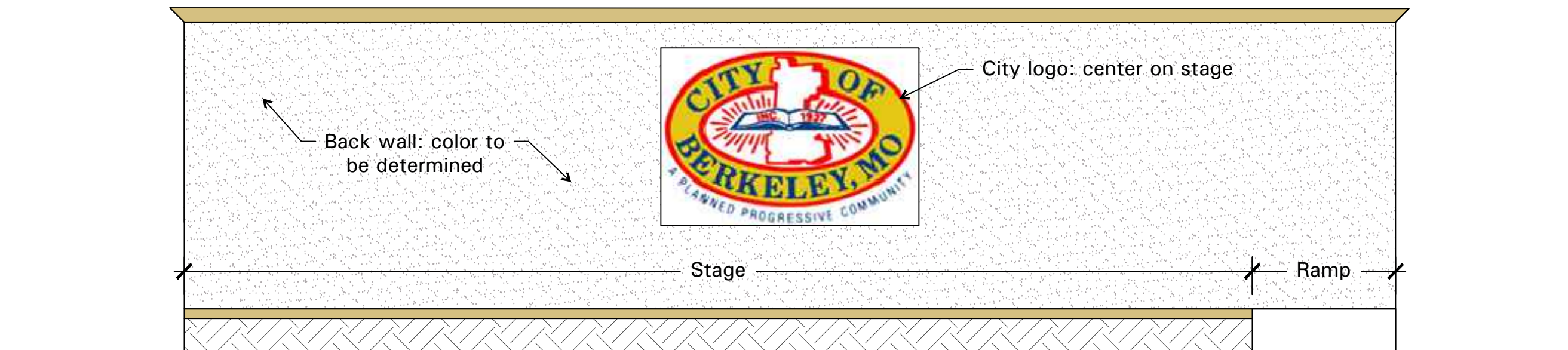


1 Park pavilion with stage and memorial plaza





1 Wall of Honor facing Airport Rd.



2 Wall facing stage



1 Pavilion with stage



2 Entry Sign

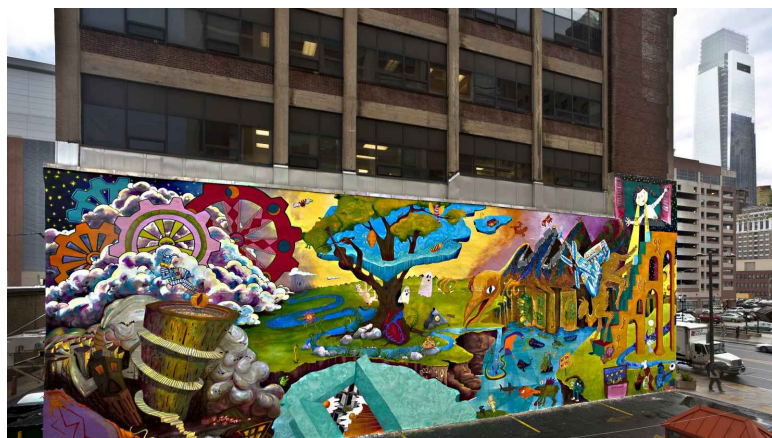




1 Bus shelter



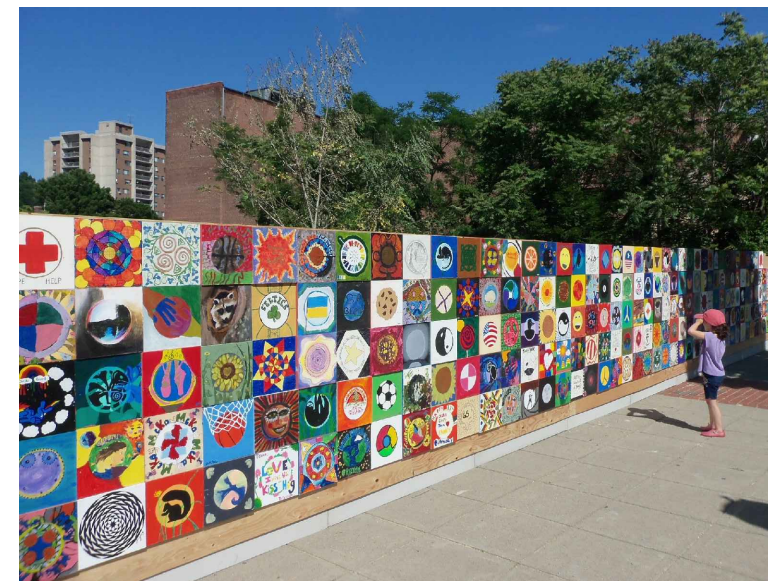
2 Bench with trash receptacle



3 Community Art Wall -A



4 Community Art Wall -B



5 Community Art Wall -C